



**DRAPERY
HARDWARE**



CONTENTS

1 FORTIN *p.05*
About our company

2 ABOUT *p.07*
About our drapery hardware

3 RODS *p.08*
Our selection of curtain rods

4 BRACKETS *p.10*
Fortin-crafted wall mounts

5 FINIALS *p.16*
Decorative ends for curtain rods

6 TIE BACKS *p.26*
Wall mounted curtain tie backs

7 FINISHES *p.30*
Color options



Fortin Ironworks is a family owned and operated ornamental iron and metal fabrication company located in Columbus, OH. Since 1946, we have specialized in high quality architectural ironwork and custom metal fabrication, working our way to become a titan of local industry, with a nationwide reach. Each of our products are hand crafted with the finest materials by our experienced artisans and fabricators, ensuring we provide customers with the signature high quality craftsmanship that has become synonymous with our brand. We have a vast array of available products waiting to be discovered and added to your home, property, or business. Browse this catalogue or visit our showroom to see our collection of products, and contact us to make Fortin Ironworks a part of your project today.





DRAPERY HARDWARE

Our selection of drapery hardware gives you almost endless possibilities to cater towards your taste, style, and decor. Our fabricators hand assemble each piece, in order to craft a stunning, one of a kind curtain rod that is sure to elevate any window treatment. Browse through our styles and options to get inspired for your own drapery project and create a curtain rod that fits perfectly in your space. Contact one of our estimators or stop by our showroom to get your curtain rod project started today.





starting at **\$4/ft**

CURTAIN RODS

Our selection of curtain rods ensure you won't have to worry about your drapes falling again. Choose between our two styles, be it a standard round curtain rod, or a twisted curtain rod to add some interest. Along with your curtain rod, you may want to consider our center ornaments that give your curtain rod that little bit of extra ornamentation, but won't get in the way of the curtain.

NOTE: When ordering a curtain rod, do not include finials in the dimension, only include the dimensions required for the rod itself. Rods come in one piece up to 144" (12').

ROUND

starting at
\$4.00/ft



MODEL	DIAMETER	BRACKETS	RINGS	PRICE/FT
R20	2"	### - 20	SR 25 E	\$8.00
R15	1½"	### - 15	SR 17 E SR 25 E	\$7.25
R12	1¼"	### - 12	SR 17 E	\$6.50
R10	1"	### - 10	SR 12 E	\$6.00
R75	¾"	### - 75	SR 12 E	\$5.00
R50	½"	### - 50	SR 87 E	\$4.00

TWISTED

starting at
\$7.50/ft



MODEL	DIAMETER	BRACKETS	RINGS	PRICE/FT
TWIST62	5/8"	### - 75	SR 12 E	\$7.50

CENTER ORNAMENTS



MC-1
\$25 | 6"



MC-3
\$25 | 6"



starting at \$20

BRACKETS

While a curtain rod might hold the drapes up, something needs to hold up your curtain rod. Each bracket is hand crafted by our own fabricators, and are ready to fit whatever application you may need. Each bracket is easy to install, and hold each curtain rod snugly, ensuring your drapes aren't going to fall any time soon. If you don't like any of the brackets you see here, contact us and see how you can get started on a custom bracket design to fit whatever your needs are.

B35

\$20



4" TALL
3½" TO ROD CENTER

MODEL | DIAMETER | OFFSET

B35 - 20	2"	3½"
B35 - 15	1½"	
B35 - 12	1¼"	
B35 - 10	1"	
B35 - 75	¾"	
B35 - 50	½"	

B55

\$20



4" TALL
5½" TO ROD CENTER

MODEL | DIAMETER | OFFSET

B55 - 20	2"	5½"
B55 - 15	1½"	
B55 - 12	1¼"	
B55 - 10	1"	
B55 - 75	¾"	
B55 - 50	½"	

AB35 | ADJUSTABLE

\$20



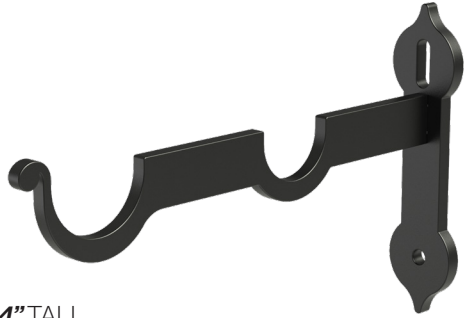
4" TALL
3½" - 5½" TO ROD CENTER

MODEL | DIAMETER | OFFSET

AB35 - 20	2"	2½" to 4½"
AB35 - 15	1½"	
AB35 - 12	1¼"	
AB35 - 10	1"	
AB35 - 75	¾"	
AB35 - 50	½"	

BDBL

\$20



4" TALL
2½" & 5½" TO ROD CENTER

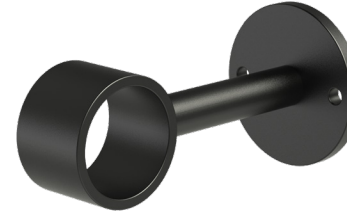
MODEL | DIAMETER | OFFSET

BDBL - 20	2"	1¼"	2½"
BDBL - 12	1¼"	1"	to
BDBL - 10	1"	¾"	5½"

**CONTACT FOR PRICING
ON CUSTOM SIZING**

CB35

\$20



2" DIAMETER
3½" TO ROD CENTER

MODEL | DIAMETER | OFFSET

CB35 - 20	2"	
CB35 - 15	1½"	
CB35 - 12	1¼"	3½"
CB35 - 10	1"	
CB35 - 75	¾"	
CB35 - 50	½"	

B35H

\$20



3" WIDE
3½" TO ROD CENTER

MODEL | DIAMETER | OFFSET

B35H - 20	2"	
B35H - 15	1½"	
B35H - 12	1¼"	3½"
B35H - 10	1"	
B35H - 75	¾"	
B35H - 50	½"	

B35N

\$20



2⅝" TALL
3½" TO ROD CENTER

MODEL | DIAMETER | OFFSET

B35N - 20	2"	
B35N - 15	1½"	
B35N - 12	1¼"	3½"
B35N - 10	1"	
B35N - 75	¾"	
B35N - 50	½"	

B35M

\$20



3" TALL
3½" TO ROD CENTER

MODEL | DIAMETER | OFFSET

B35M - 20	2"	
B35M - 15	1½"	
B35M - 12	1¼"	3½"
B35M - 10	1"	
B35M - 75	¾"	
B35M - 50	½"	

B35R

\$20



4" TALL
3½" TO ROD CENTER

MODEL | DIAMETER | OFFSET

B35R - 20	2"	
B35R - 15	1½"	
B35R - 12	1¼"	3½"
B35R - 10	1"	
B35R - 75	¾"	
B35R - 50	½"	

SLB | ADJUSTABLE

\$20



3" TALL
3½" - 4½" TO ROD CENTER

MODEL | DIAMETER | OFFSET

SLB - 20	2"	3½" to 4½"
SLB - 15	1½"	
SLB - 12	1¼"	
SLB - 10	1"	
SLB - 75	¾"	
SLB - 50	½"	

L35N

\$20



3" TALL
3½" TO ROD CENTER

MODEL | DIAMETER | OFFSET

L35N - 20	2"	3½"
L35N - 15	1½"	
L35N - 12	1¼"	
L35N - 10	1"	
L35N - 75	¾"	
L35N - 50	½"	

L35T

\$20



4" TALL
3½" TO ROD CENTER

MODEL | DIAMETER | OFFSET

L35T - 20	2"	3½"
L35T - 15	1½"	
L35T - 12	1¼"	
L35T - 10	1"	
L35T - 75	¾"	
L35T - 50	½"	

SIDE WALL BRACKETS

\$15/each

MADE TO FIT ANY ROD SIZE



SWBC



SWBO

RETURNS

\$20/bend

CAN BE USED WITH ANY BACKPLATE



**BENT
RETURN**



**MITERED
RETURN**

CURTAIN RINGS

\$2/each



MODEL	DIAMETER	ROD
SR 25 E	2½"	R20
SR 17 E	1¾"	R15, R12
SR 12 E	1¼"	R10, R75, TWIST62
SR 87 E	⅞"	R50



starting at \$8

FINIALS

The decorative ends of the curtain rod are where you can really bring out the style that you want your curtain rod to exude. Our finial selection includes classical designs that have more ornamentation, or minimal designs that blend into the background and let your drapes do all the talking for you. No matter your style or tastes, we are sure to have a finial that will fit your needs.



F2

\$20 | 2½"



F3

\$15 | 2½"



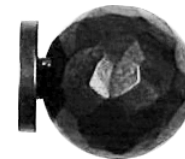
F6

\$20 | 6½"



F7

\$20 | 4⅛"



F15

\$20 | ¾" - 2"



F16

\$8 | 1⅛" - 2⅜"



F17
\$30 | 8"



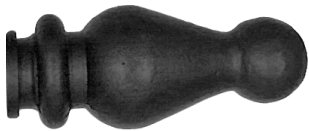
F18
\$30 | 8"



F27
\$20 | 2½"



F29
\$20 | 6½"



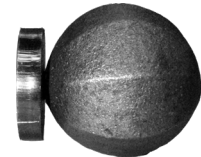
F19
\$20 | 5"



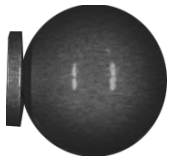
F20
\$20 | 2¼"



F31
\$20 | 4⅛"



F32
\$15 | 1½"



F21
\$15 | 2"



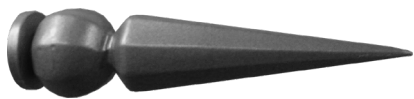
F26
\$20 | 2½"



F33
\$20 | 5"

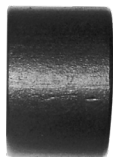


F34
\$15 | 2¾"



F37

\$20 | 5 1/8"



F39

\$15 | 1"



F53

\$20 | 5"



F58

\$20 | 5 3/4"



F42

\$15 | 3 1/8"



F47

\$25 | 5 1/2"



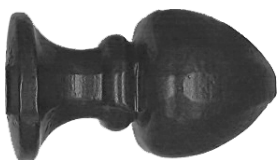
F59

\$15 | 4 1/2"



F61

\$20 | 4 1/4"



F48

\$20 | 3 1/4"



F50

\$20 | 6 1/2"



F62

\$15 | 4"



F63

\$15 | 2"



F65

\$20 | 6¼"



F66

\$20 | 5¼"



F83

\$20 | 8⅛"



F85

\$25 | 9⅛"



F71

\$20 | 3½"



F72

\$15 | 2¼"



F86

\$25 | 3⅛"



F88

\$20 | 4¼"



F78

\$30 | 7⅝"



F81

\$25 | 3"



F91

\$15 | 3¾"



F92

\$15 | 3"



F93

\$15 | 1¾"



F94

\$20 | 4½"



F98

\$20 | 5⅜"



F99

\$15 | 4"



F100

\$20 | 4"



F101

\$20 | 5¼"





starting at \$20

TIE BACKS

When you want the sun to shine through, why not let in as much light as possible? Our tie backs allow for drapes to be pushed away, and let the light pour in through your window. When not in use, they can add to the style of both your space, as well as match the ornamentation on your curtain rod. Keep in mind the thickness of your drapes, as well as the width of the fabric, as some tie backs may be too small for your application.



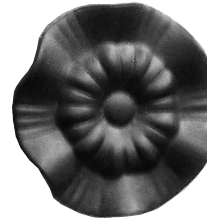
TB2

\$20 | 1⁷/₈"



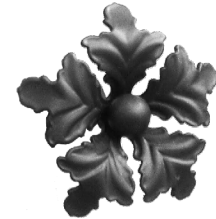
TB3

\$20 | 2⁵/₈"



TB4

\$20 | 2¹/₈"



TB5

\$25 | 6"



TB6

\$25 | 3³/₄"



TB8

\$20 | 3¹/₈"



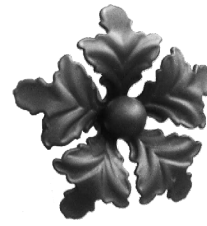
TB10

\$25 | 3⁷/₈"



TB14

\$20 | 3"



TB23

\$25 | 4"



TB25

\$20 | 3¹/₂"



TB17

\$25 | 3³/₄"



TB20

\$25 | 3³/₄"



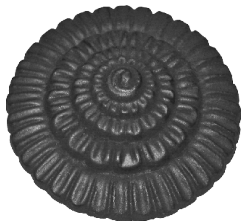
TB26

\$25 | 4"



TB27

\$20 | 2¹/₈"



TB21

\$25 | 4¹/₄"



TB22

\$25 | 4"



TB28

\$25 | 4³/₈"



TB29

\$25 | 3³/₄"

FINISH OPTIONS

POWDER COAT FINISHES



Black



P7



Pewter



White



Black/Bronze



Soft Rub
Bronze



Gold



Copper Rock

REV. 04.30.21

**944 W. FIFTH AVE
COLUMBUS, OH 43212
614 . 291 . 4342**